



JLL Presents

# State of Missouri

Real Estate Opportunities

## For Sale – 222,641 SF on 87.58 Acres

2323 North Ash Street, Nevada, Missouri



### Property Description

The subject property is located at 2323 North Ash Street in Nevada, Missouri. The site includes 87.58 acres of land. The site has been improved with five main buildings and several ancillary and support buildings in a campus setting, totaling 222,641 s.f.

For more information on this site or other available locations, please see:

[www.stateofmorealestate.com](http://www.stateofmorealestate.com)



For more information, contact:

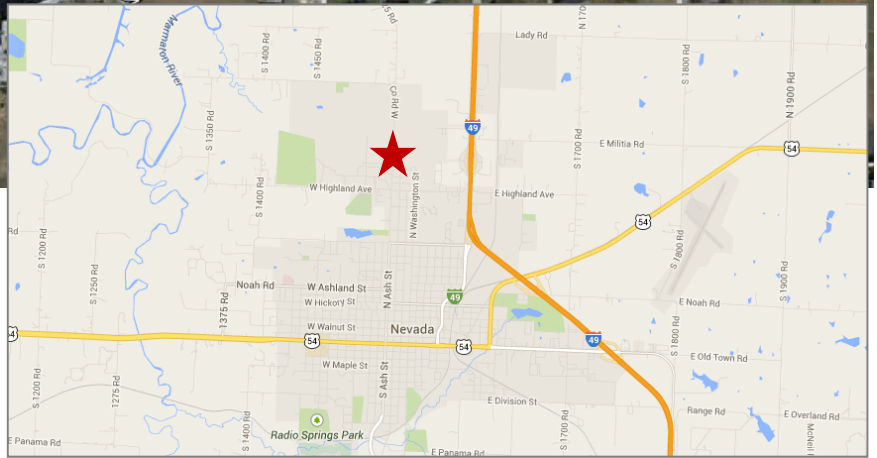
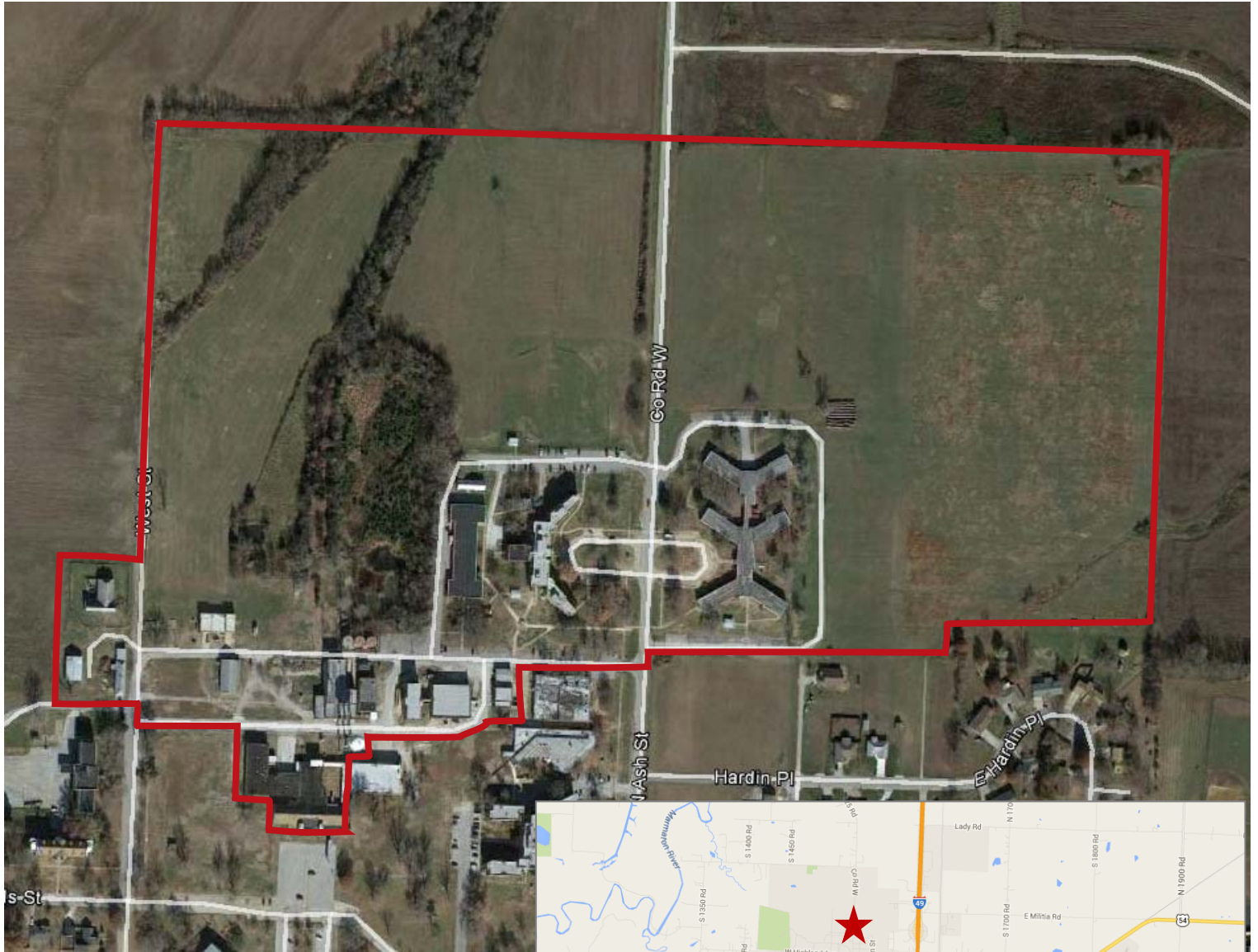
Hugh Murphy  
[hugh.murphy@am.jll.com](mailto:hugh.murphy@am.jll.com)  
+1 312 228 3618

Brian Carroll  
[brianc.carroll@am.jll.com](mailto:brianc.carroll@am.jll.com)  
+1 312 228 3312



# For Sale – 222,641 SF on 87.58 Acres

2323 North Ash Street, Nevada, Missouri



For more information, contact:

Hugh Murphy  
[hugh.murphy@am.jll.com](mailto:hugh.murphy@am.jll.com)  
+1 312 228 3618

Brian Carroll  
[brianc.carroll@am.jll.com](mailto:brianc.carroll@am.jll.com)  
+1 312 228 3312

